
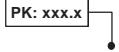









Légende - Implantation des protections acoustiques



-  Limite communale
-  Point Kilométrique
-  Passage Supérieur
-  A63
-  Déblai
-  Remblai

Mesures acoustiques :

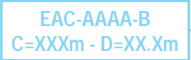
Typologie des bâtiments

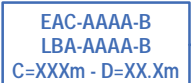
-  Habitations
-  Bureaux
-  Bâtiments non concernés par les objectifs ou bâtiments non intégrés aux calculs acoustiques

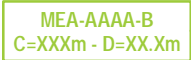
Calculs sur bâtis

-  Point récepteur et son numéro
-  Bâti nécessitant un renforcement de l'isolement de façade et son numéro

Implantation des protections acoustiques

- 

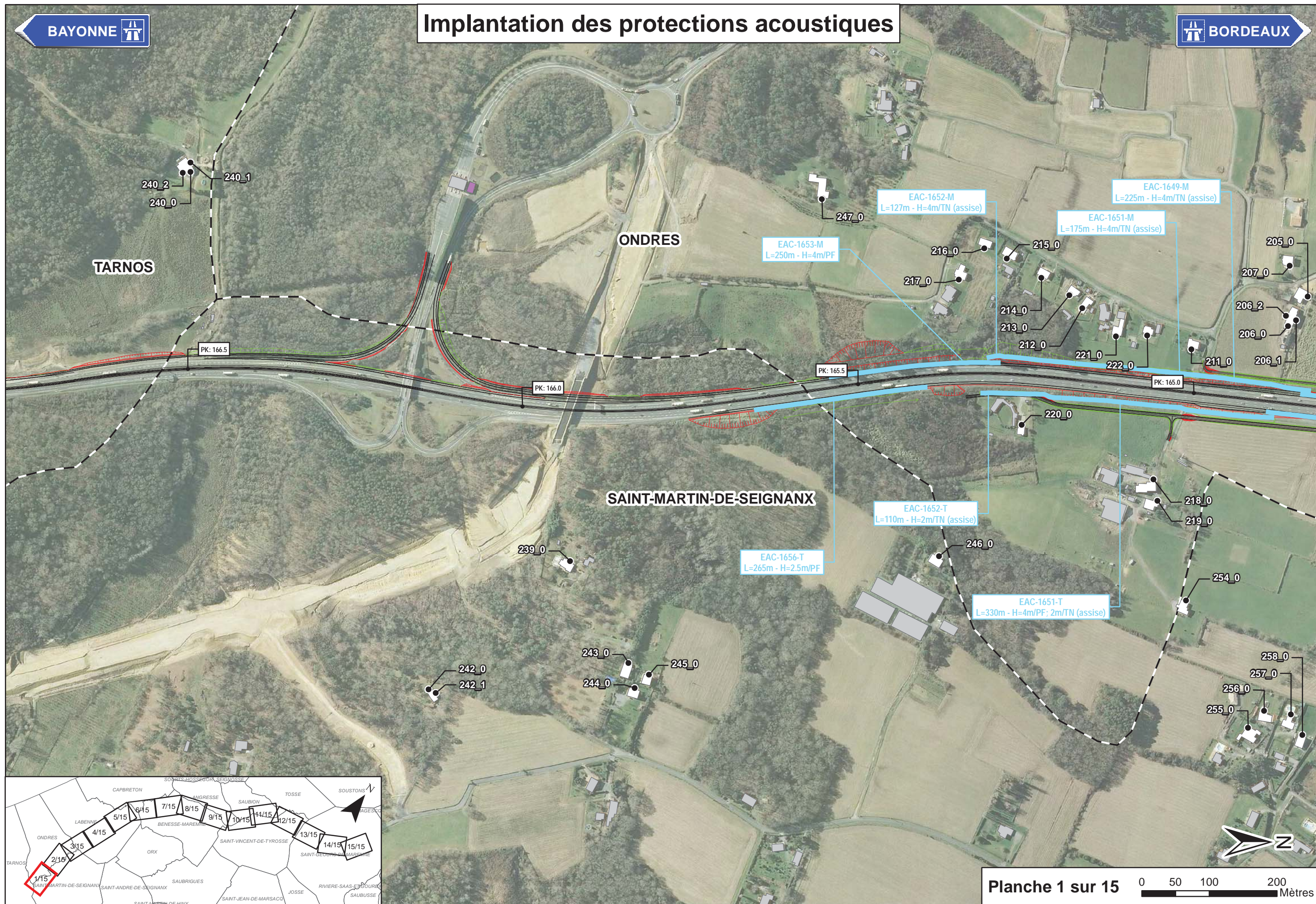
Ecran acoustique absorbant
et caractéristiques : AAAA Dénomination
B Sens (M : Coté Mer; T : Coté Terre)
C Longueur en mètre
D Hauteur en mètre (PF : Plateforme ;
TN : Terrain Naturel)
- 

Ecran acoustique réfléchissant
et caractéristiques : AAAA Dénomination
B Sens (M : Coté Mer; T : Coté Terre)
C Longueur en mètre
D Hauteur en mètre (PF : Plateforme ;
TN : Terrain Naturel)
- 

Merlon acoustique
et caractéristiques : AAAA Dénomination
B Sens (M : Coté Mer; T : Coté Terre)
C Longueur en mètre
D Hauteur en mètre (PF : Plateforme ;
TN : Terrain Naturel)



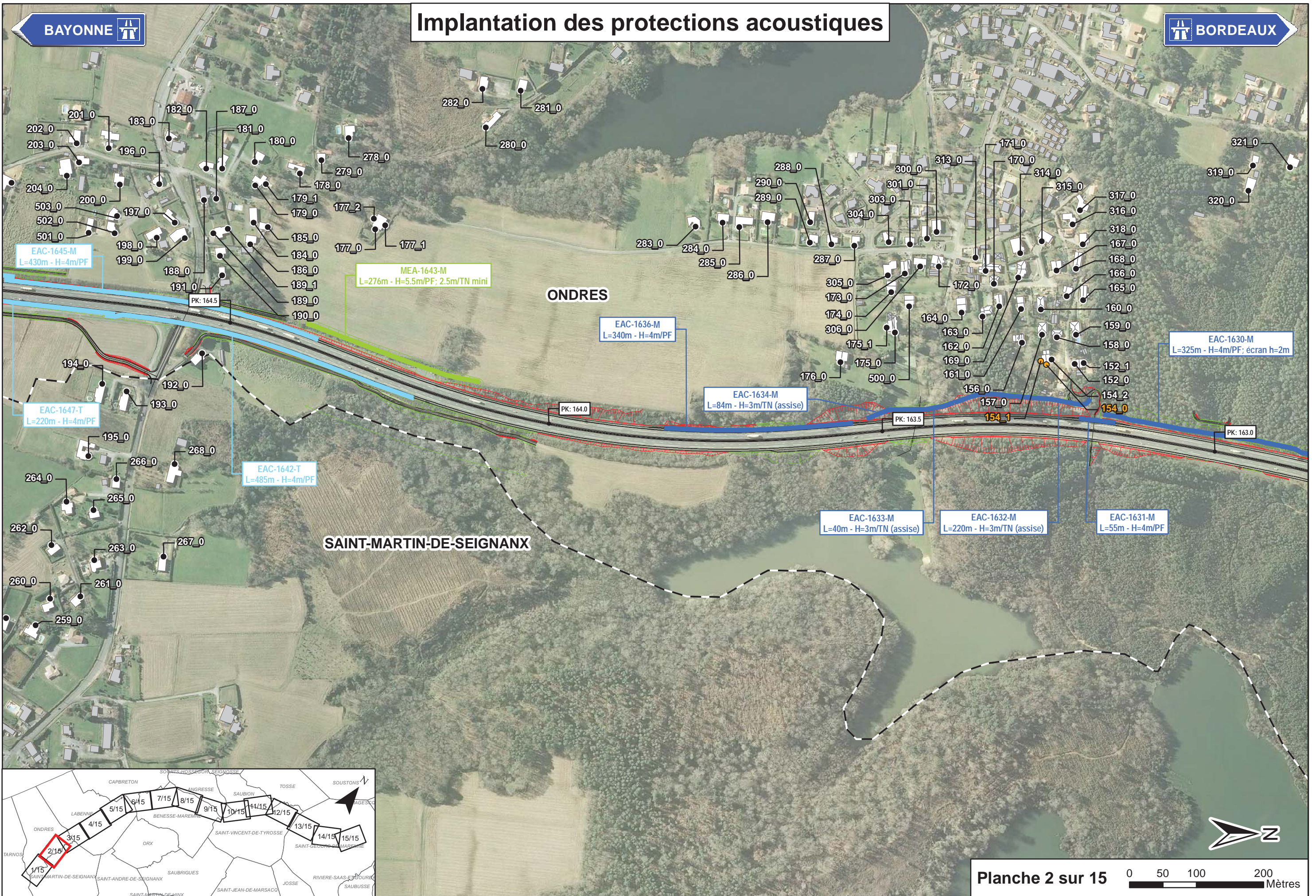
Implantation des protections acoustiques



BAYONNE

Implantation des protections acoustiques

BORDEAUX



EAC-1645-M
L=430m - H=4m/PF

MEA-1643-M
L=276m - H=5.5m/PF; 2.5m/TN mini

EAC-1636-M
L=340m - H=4m/PF

EAC-1634-M
L=84m - H=3m/TN (assise)

EAC-1630-M
L=325m - H=4m/PF; écran h=2m

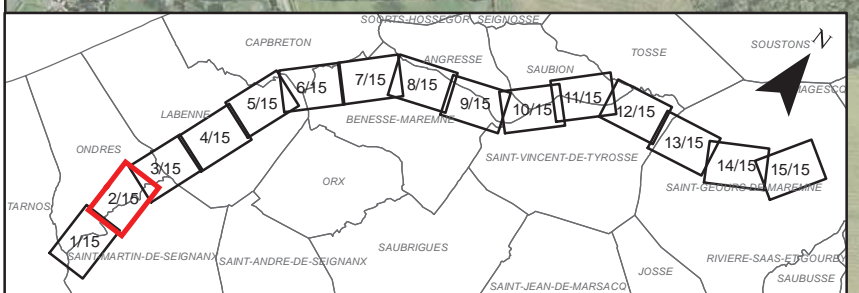
EAC-1647-T
L=220m - H=4m/PF

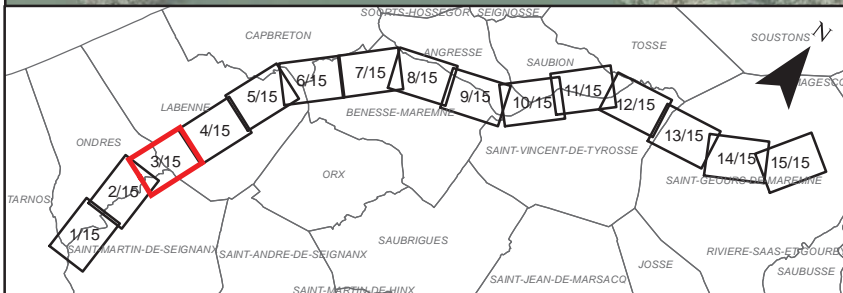
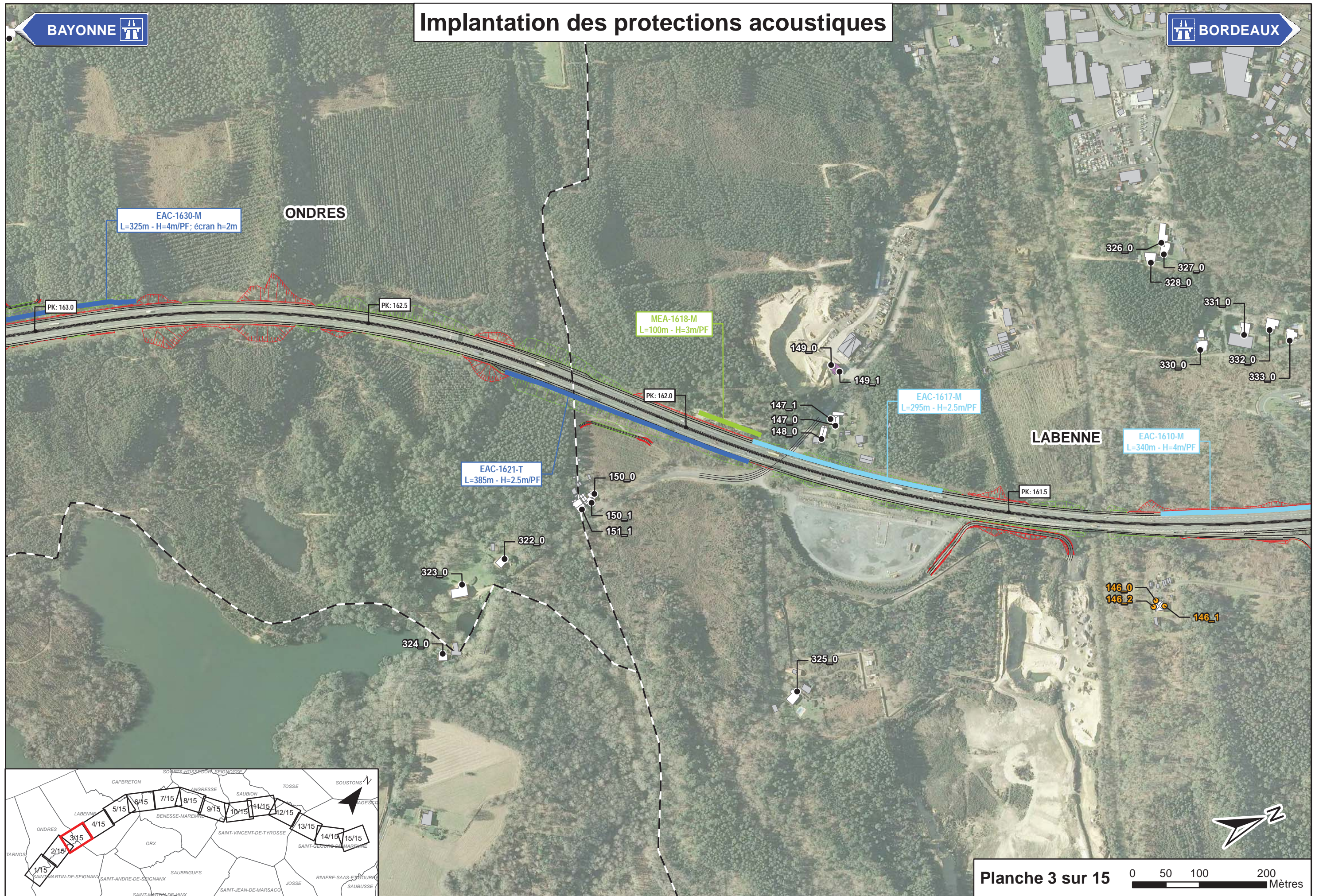
EAC-1642-T
L=485m - H=4m/PF

EAC-1633-M
L=40m - H=3m/TN (assise)

EAC-1632-M
L=220m - H=3m/TN (assise)

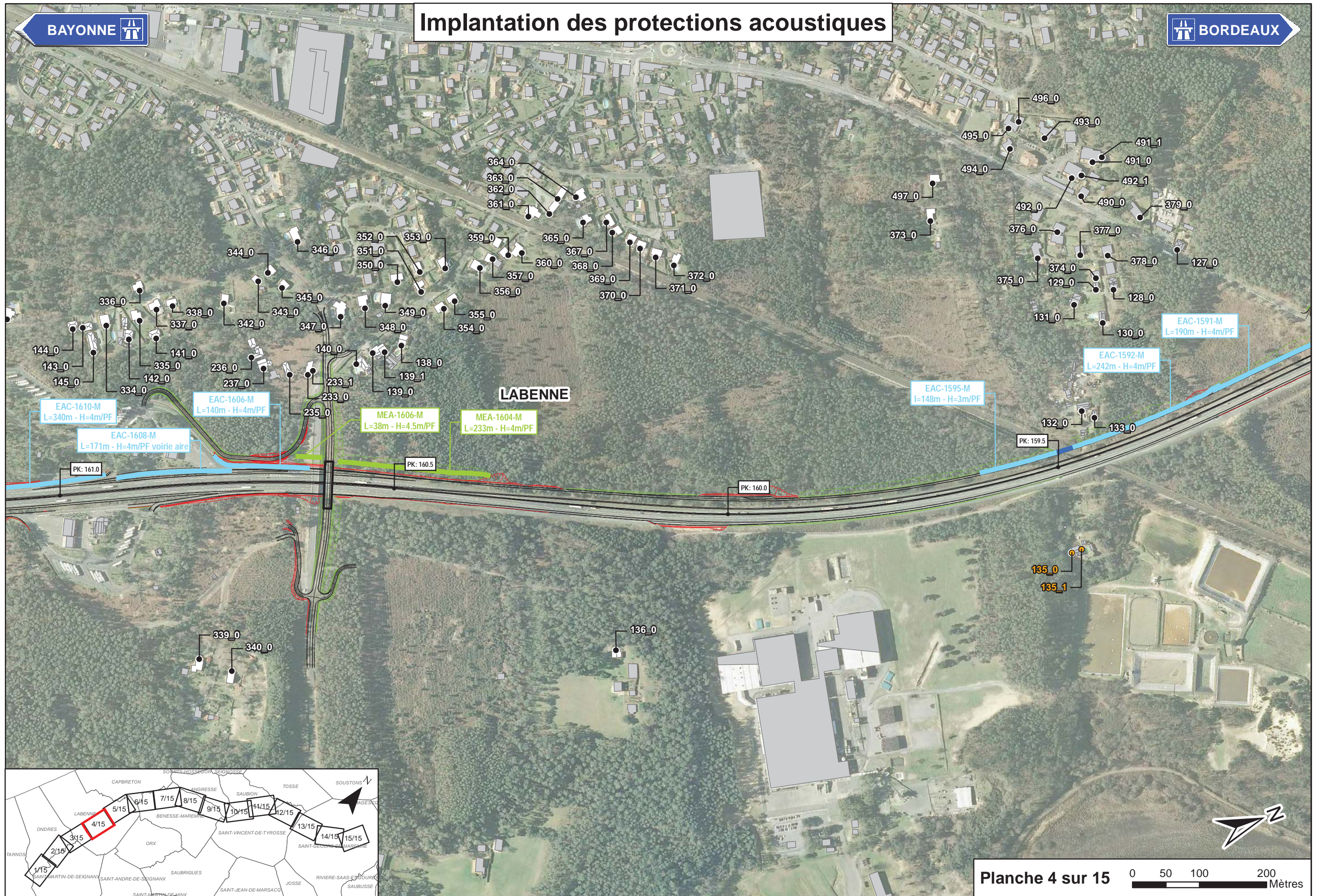
EAC-1631-M
L=55m - H=4m/PF

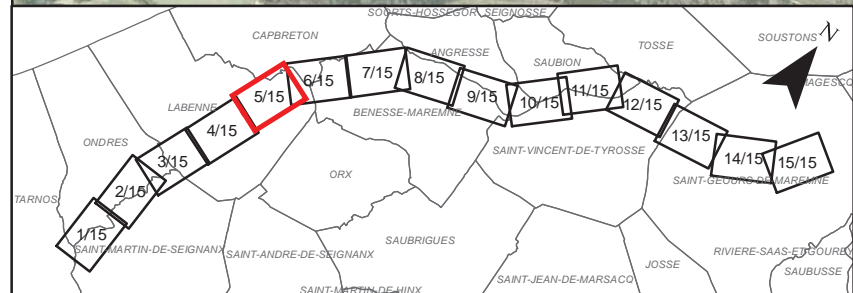
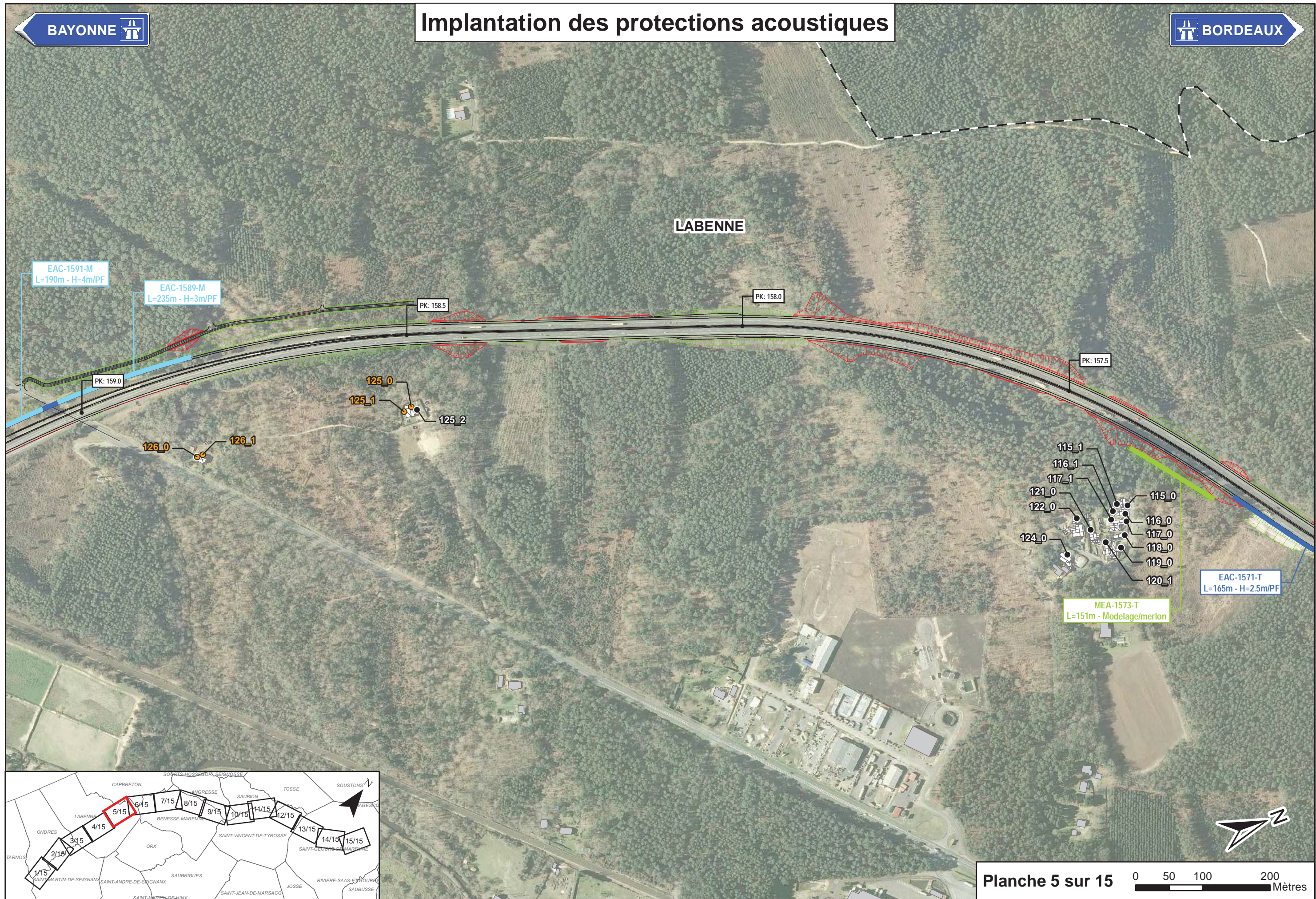


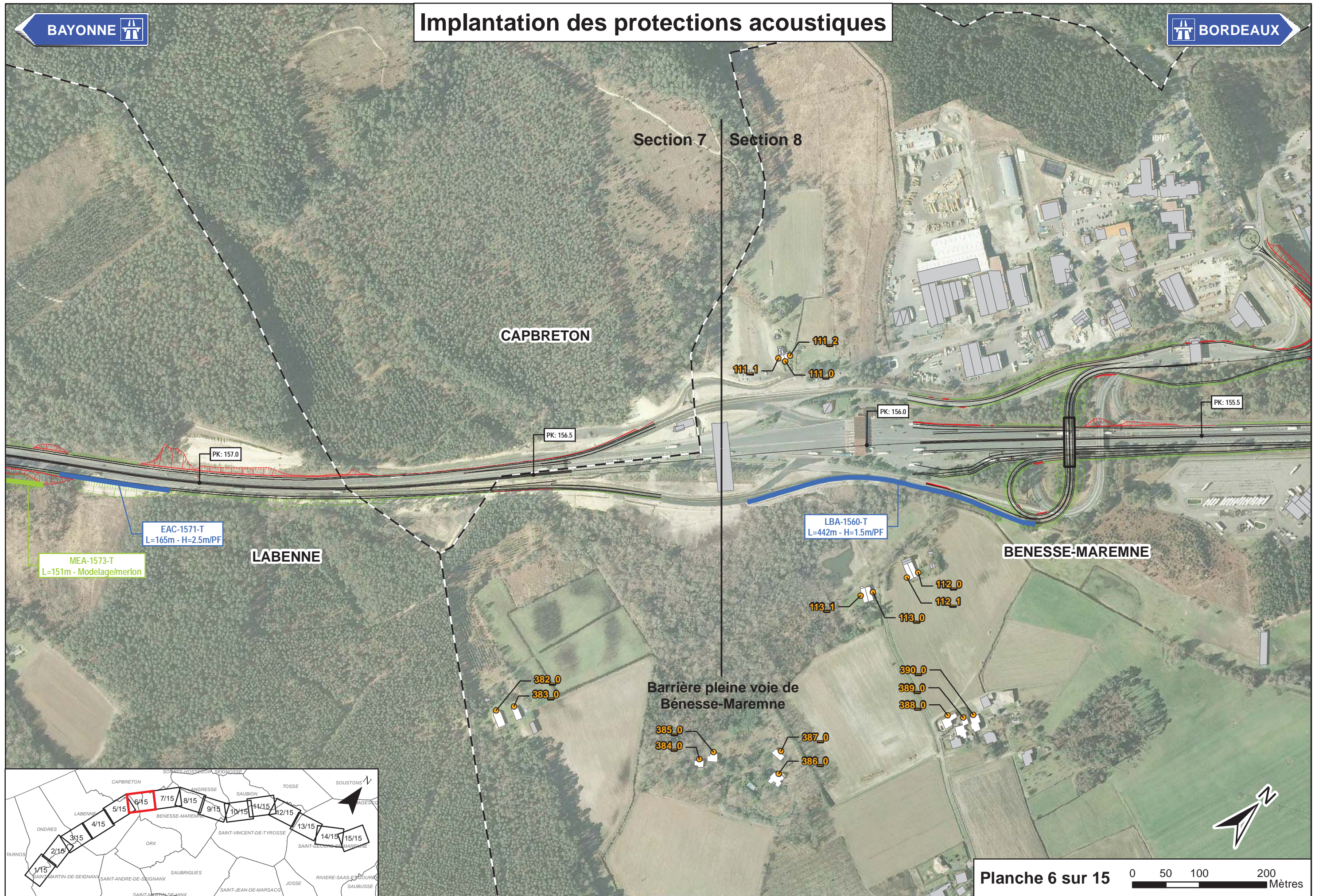




Implantation des protections acoustiques







LABENNE

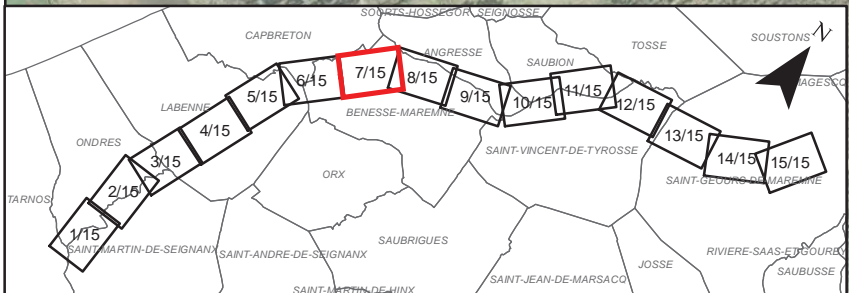
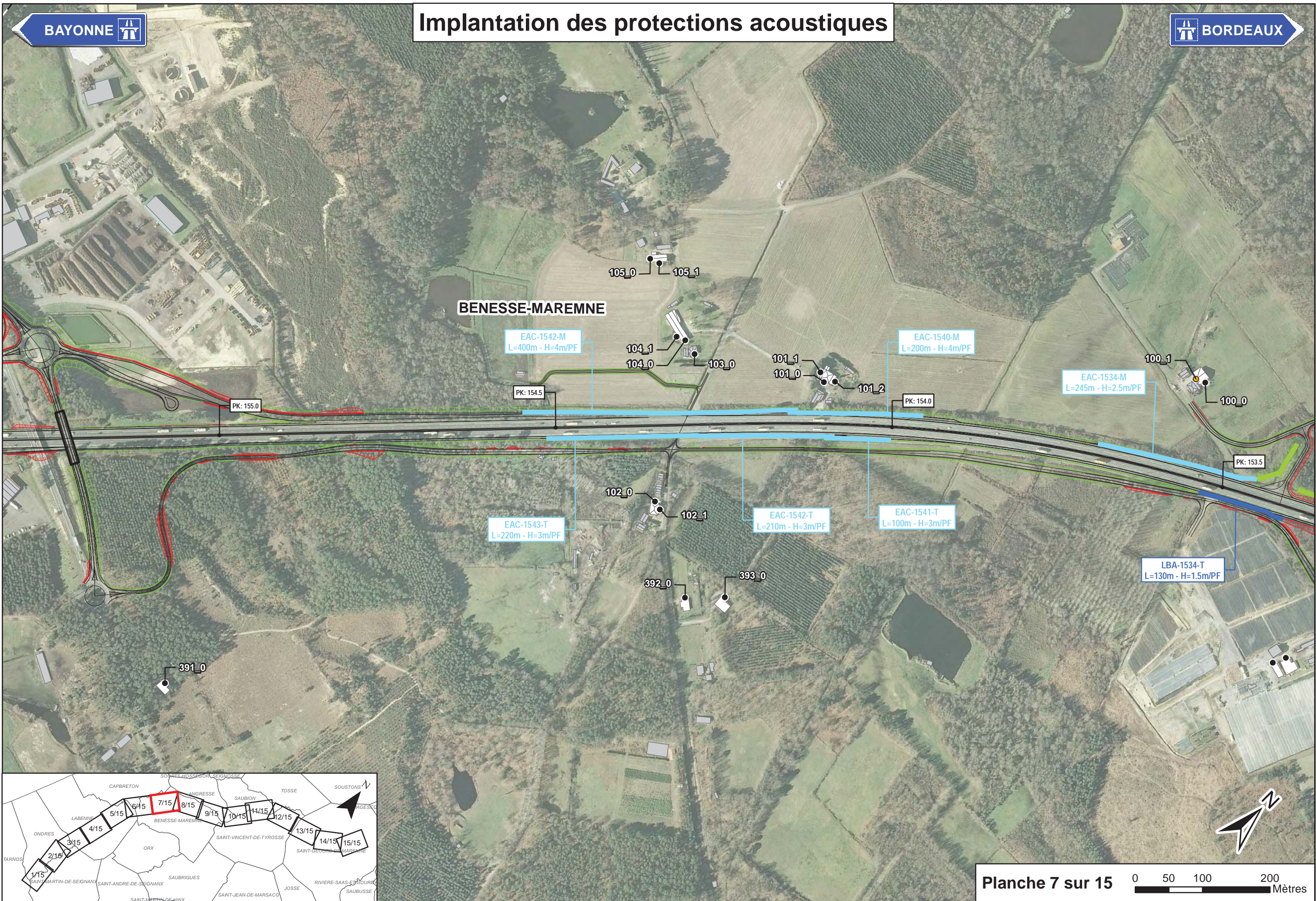
CAPBRETON

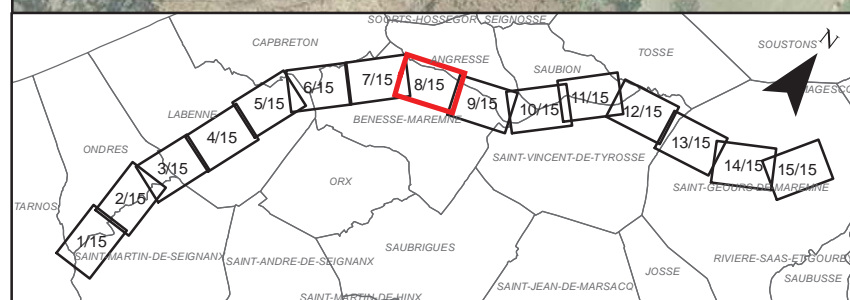
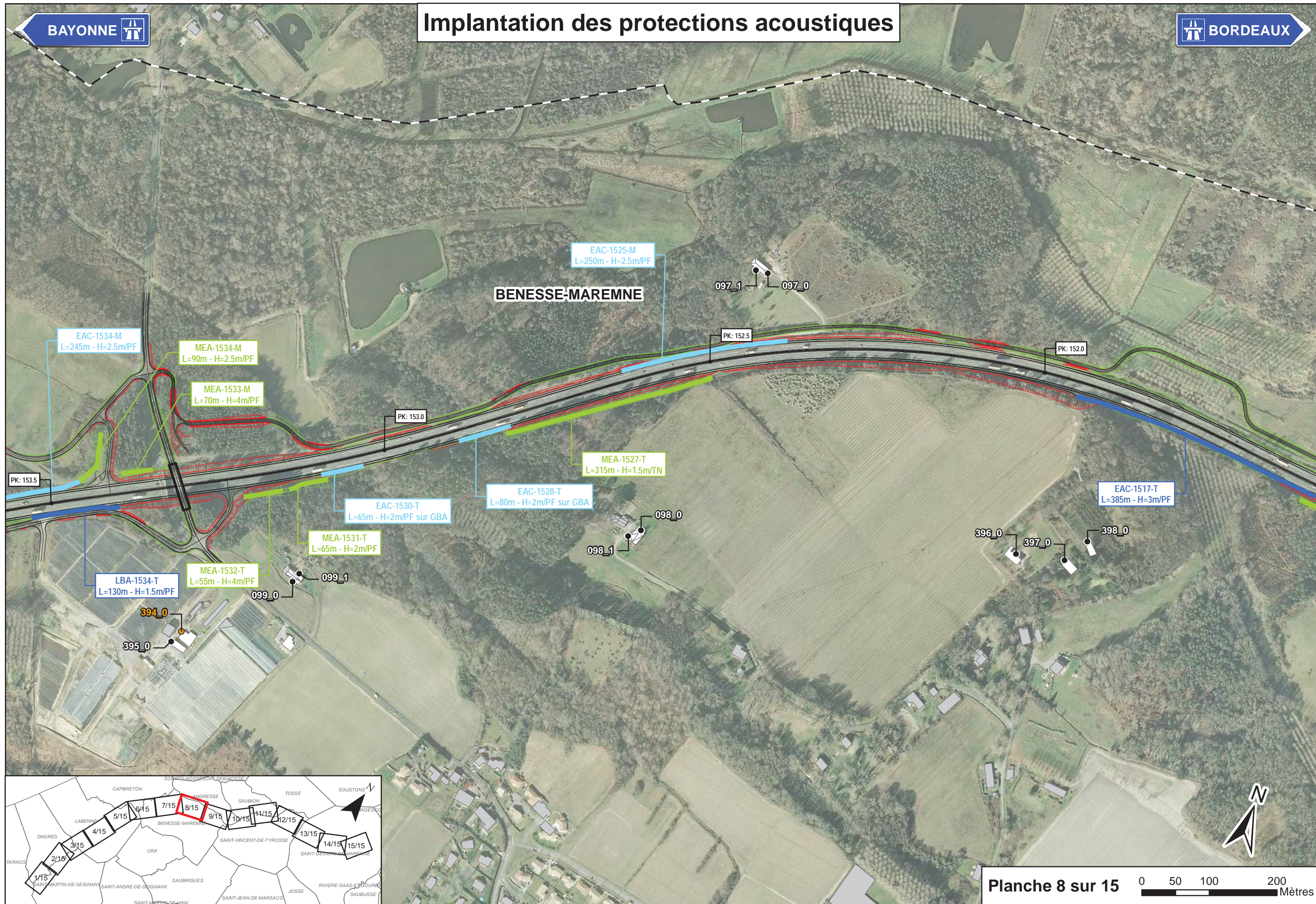
BENESSE-MAREMNE

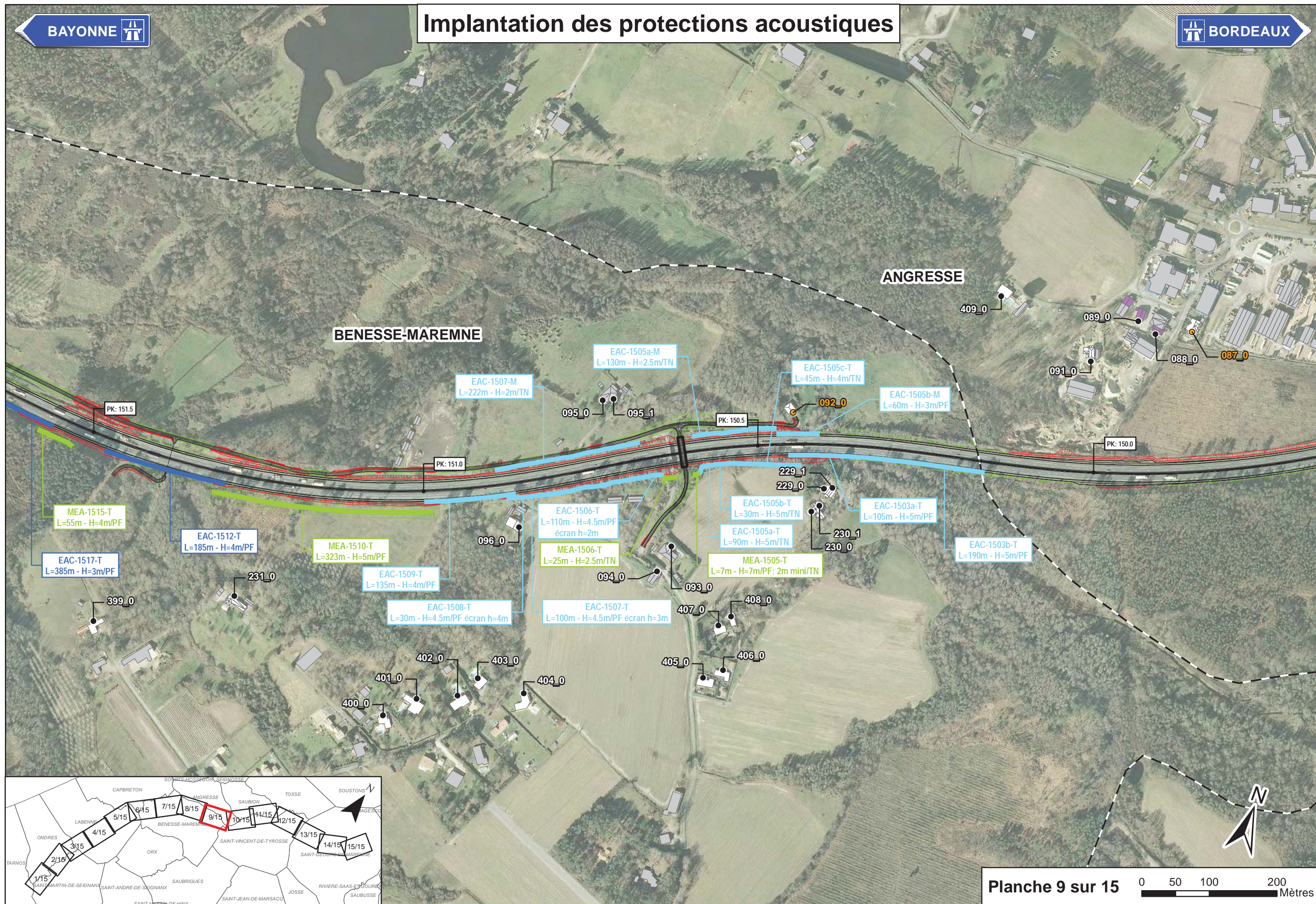
Section 7

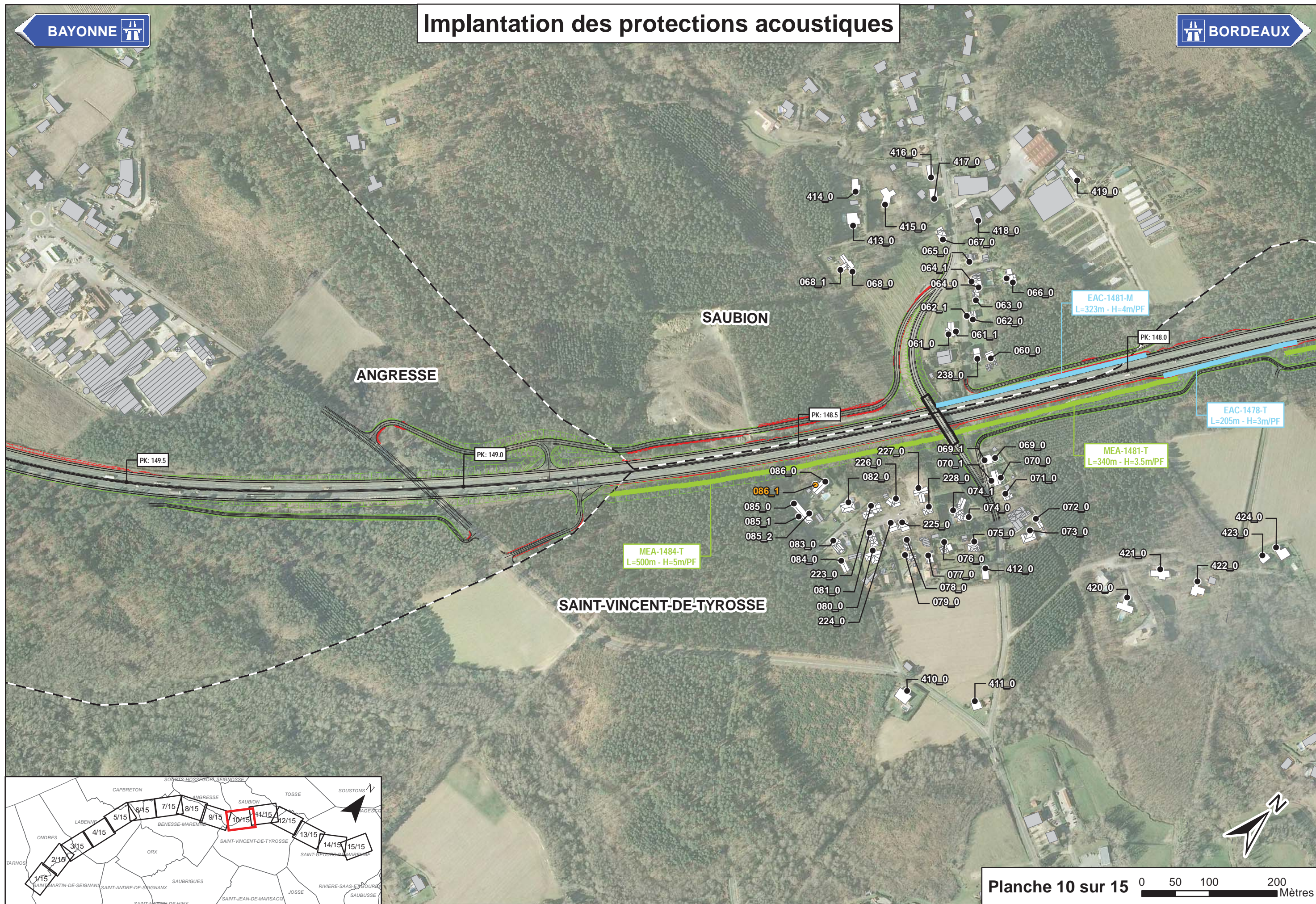
Section 8

Barrière pleine voie de Bénése-Maremne









ANGRESSE

SAUBION

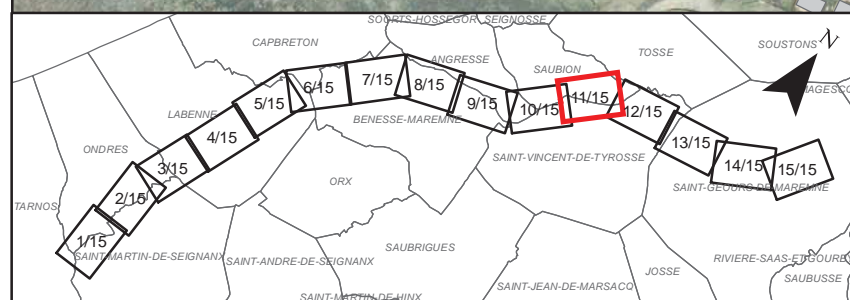
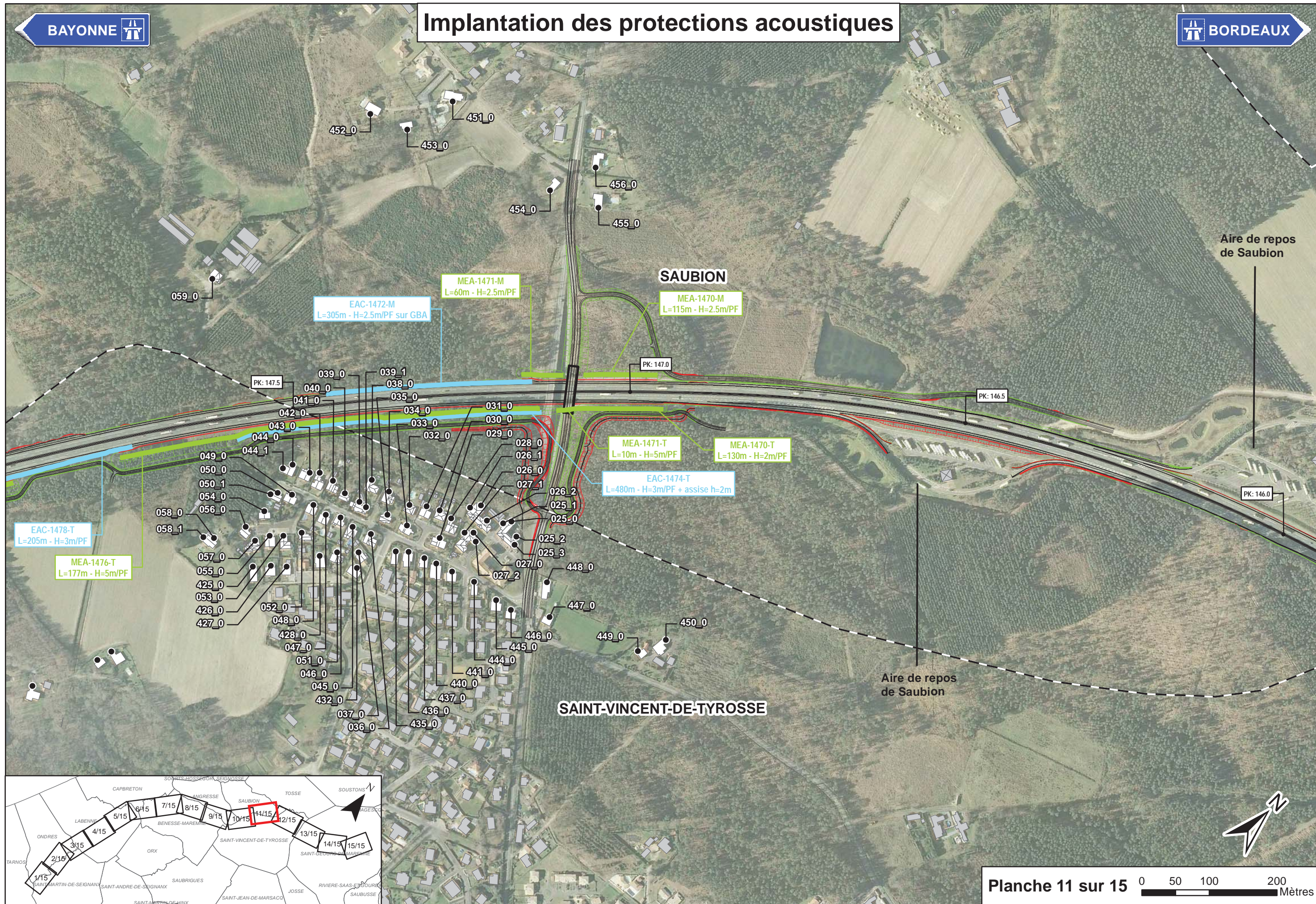
SAINT-VINCENT-DE-TYROSSE

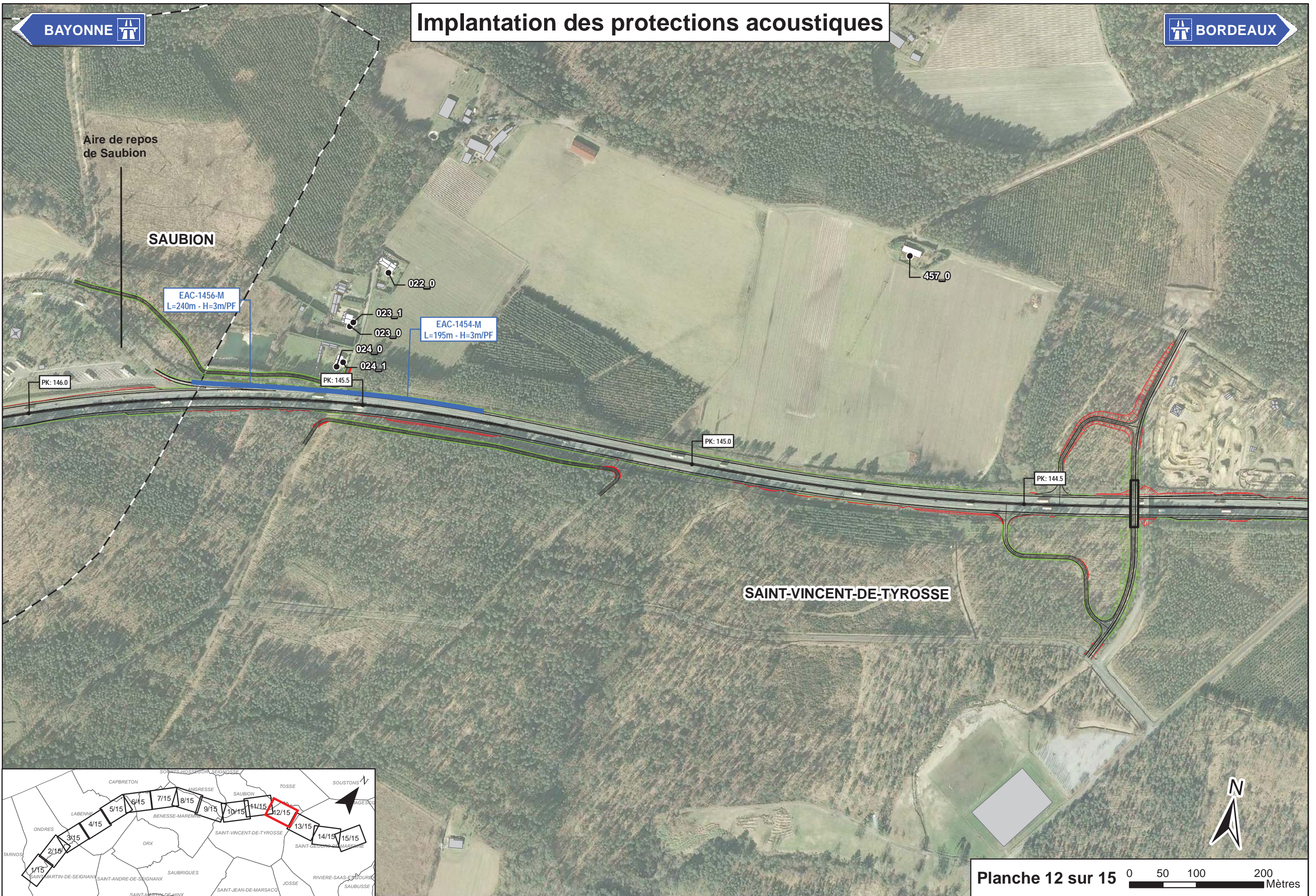
EAC-1481-M
L=323m - H=4m/PF

MEA-1484-T
L=500m - H=5m/PF

EAC-1478-T
L=205m - H=3m/PF

MEA-1481-T
L=340m - H=3.5m/PF





Aire de repos de Saubion

SAUBION

EAC-1456-M
L=240m - H=3m/PF

EAC-1454-M
L=195m - H=3m/PF

PK: 146.0

PK: 145.5

PK: 145.0

PK: 144.5

SAINT-VINCENT-DE-TYROSSE

